

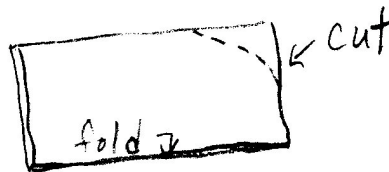
Rotary Cutting Directions for Making Eye Glass Cases (Faster Method)

FOR FABRICS THAT DO NOT RAVEL: (We recommend vinyl fabric or fleece)

Cut strips of fabric 7" wide.

Cut squares from the strips 7" wide.

Fold square in half with right side outside cut curve on one end.



Machine zigzag, blanket stitch, or straight stitch along upper long curved edge. Backstitch at beginning and ending to secure stitching.

FOR FABRICS THAT DO RAVEL: (We recommend denim or pre-quilted fabric)

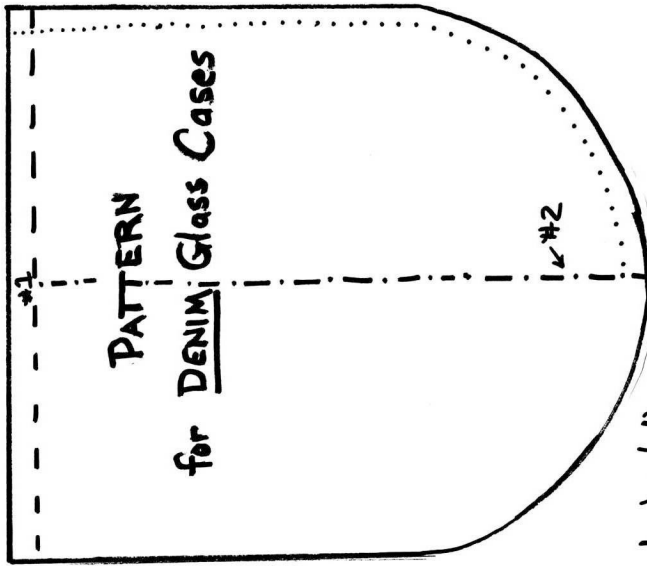
Cut strips of fabric 7 1/2" wide.

Cut squares from the strips 7 1/2" wide.

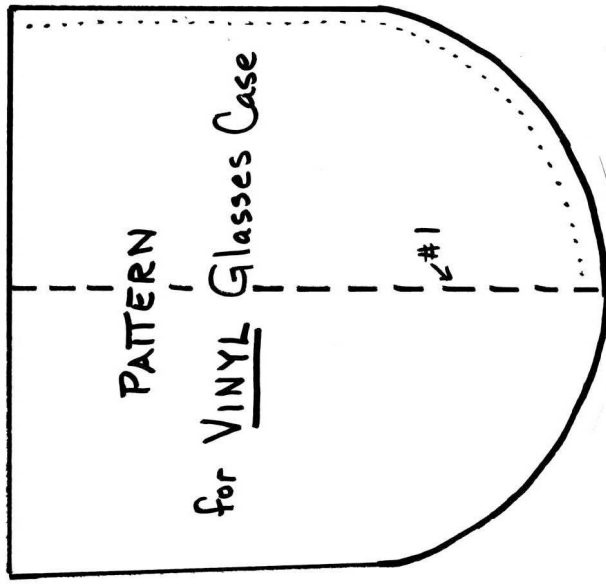
Fold square in half with right side outside cut curve on one end as above.

Open piece and fold 3/8" in along top of case for a hem and stitch down. (zigzag or straight stitching)

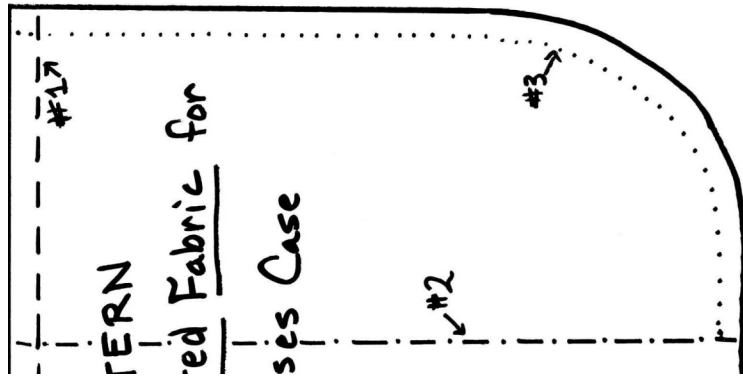
Fold in half right sides together and straight or zigzag stitch along long curved edge. Backstitch at beginning and ending to secure stitching. Turn case right side out.



1. Fold on dashed line & stitch down with straight stitch. (#1)
2. Fold wrong sides together & pin in place. (along --- line.)
3. Zigzag and straight stitch along dotted line. Backstitch at beginning and end.



1. Fold on dashed lines vinyl side out.
2. Pin in place.
3. Stitch along dotted line. Backstitch at beginning & ending. Use zigzag stitching.



lines wrong sides together, and (#1) along line and pin in

d line. Backstitch at beginning + side out.